

The Carriage Shed



1-800-441-6057

Classic Garden Structures 2011

Classic Series

Size	T-111 A-Frame Storage	Vinyl/Pine A-Frame Storage	T-111 Quaker Storage	Vinyl/Pine Quaker Storage	T-111 Kountry Shed	Vinyl/Pine Kountry Shed
6x8	\$2,478.00	\$2,670.00	\$2,540.00	\$2,740.00	\$2,545.00	\$2,740.00
6x10	\$2,725.00	\$2,935.00	\$2,785.00	\$3,000.00	\$2,860.00	\$3,069.00
8x8	\$2,679.00	\$2,888.00	\$2,740.00	\$2,955.00	\$2,745.00	\$2,955.00
8x10	\$3,010.00	\$3,235.00	\$3,085.00	\$3,320.00	\$3,095.00	\$3,320.00
8x12	\$3,255.00	\$3,496.00	\$3,330.00	\$3,580.00	\$3,340.00	\$3,580.00
8x14	\$3,500.00	\$3,760.00	\$3,579.00	\$3,845.00	\$3,585.00	\$3,845.00
8x16	\$3,790.00	\$4,075.00	\$3,879.00	\$4,175.00	\$3,875.00	\$4,160.00
10x10	\$3,369.00	\$3,635.00	\$3,450.00	\$3,720.00	\$3,450.00	\$3,720.00
10x12	\$3,615.00	\$3,899.00	\$3,699.00	\$3,999.00	\$3,699.00	\$3,980.00
10x14	\$3,945.00	\$4,260.00	\$4,045.00	\$4,360.00	\$4,028.00	\$4,345.00
10x16	\$4,275.00	\$4,610.00	\$4,375.00	\$4,723.00	\$4,360.00	\$4,690.00
10x18	\$4,610.00	\$4,970.00	\$4,705.00	\$5,090.00	\$4,689.00	\$5,055.00
10x20	\$4,935.00	\$5,320.00	\$5,050.00	\$5,450.00	\$5,020.00	\$5,400.00
10x22	\$5,265.00	\$5,680.00	\$5,380.00	\$5,815.00	\$5,350.00	\$5,765.00
10x24	\$5,595.00	\$6,029.00	\$5,730.00	\$6,180.00	\$5,680.00	\$6,110.00
12x12	\$3,999.00	\$4,315.00	\$4,099.00	\$4,415.00	\$4,080.00	\$4,399.00
12x14	\$4,370.00	\$4,730.00	\$4,479.00	\$4,845.00	\$4,456.00	\$4,810.00
12x16	\$4,740.00	\$5,125.00	\$4,860.00	\$5,260.00	\$4,825.00	\$5,210.00
12x18	\$5,115.00	\$5,520.00	\$5,240.00	\$5,655.00	\$5,195.00	\$5,605.00
12x20	\$5,485.00	\$5,920.00	\$5,620.00	\$6,069.00	\$5,569.00	\$6,000.00
12x22	\$5,855.00	\$6,330.00	\$5,999.00	\$6,480.00	\$5,940.00	\$6,415.00
12x24	\$6,230.00	\$6,730.00	\$6,379.00	\$6,895.00	\$6,310.00	\$6,810.00
12x26	\$6,640.00	\$7,175.00	\$6,810.00	\$7,360.00	\$6,725.00	\$7,260.00
12x28	\$7,055.00	\$7,620.00	\$7,220.00	\$7,805.00	\$7,140.00	\$7,705.00
12x30	\$7,469.00	\$8,069.00	\$7,650.00	\$8,269.00	\$7,550.00	\$8,150.00
12x32	\$7,880.00	\$8,515.00	\$8,065.00	\$8,715.00	\$7,965.00	\$8,599.00
12x34	\$8,295.00	\$8,960.00	\$8,495.00	\$9,179.00	\$8,379.00	\$9,045.00
12x36	\$8,710.00	\$9,410.00	\$8,925.00	\$9,640.00	\$8,790.00	\$9,490.00
14x16	\$5,750.00	\$6,225.00	-	-	-	-
14x18	\$6,195.00	\$6,720.00	-	-	-	-
14x20	\$6,645.00	\$7,200.00	-	-	-	-
14x22	\$7,105.00	\$7,699.00	-	-	-	-
14x24	\$7,555.00	\$8,179.00	-	-	-	-
14x26	\$8,050.00	\$8,725.00	-	-	-	-
14x28	\$8,565.00	\$9,270.00	-	-	-	-
14x30	\$9,060.00	\$9,820.00	-	-	-	-
14x32	\$9,555.00	\$10,350.00	-	-	-	-
14x34	\$10,070.00	\$10,910.00	-	-	-	-
14x36	\$10,565.00	\$11,440.00	-	-	-	-

*Door w/ Arch Trim, 10" Antique Hinges, "E" Windows, Vents and 5/8" Duratemp (T-111) Standard

*14' Wide Buildings are 14' Wide to the Outside of the Roof Line. Smaller Soffit Overhangs for More Interior Space

Classic Shed Series Specifications

Foundation	Pressure Treated 4x4's	Sub – Flooring	2x4 Pressure Treated Floor Joists (8', 10' wide - 16 On Center ~ 12' Wide – 12" On Center)
Flooring	5/8" Ext Grade Plywood	Wall Framing	2x4 – 16" On Center
Roof Framing	2x4 Rafters – 16" On Center	Siding – Choice of	5/8" Primed Duratemp or Vinyl
Roof Deck	½" Plywood (10" Gable Overhang)	Roofing Surface	30 year Architectural Asphalt Shingle
Doors	Arch Trim on Rectangle Doors	Windows	Aluminum Vertical Slider Framed w/ 1x4 Trim
Vents	Two 8x10 Garden Vents	Siding Finish	Choice of 16 Colors
Hardware	Antique	Overhang	10"

Front Wall Door and Window Combinations

Shed Length	Storage Standard	Storage w/ Shutters	Shed Width (Kountry)	Kountry
8'	3' Door, K Window	Not Available w/ Shutters		5' Double Doors, 1 R Window
10'	4' Double Doors, (2) E Windows	4' Double Doors, (1) E Window w/ Shuttters	8'	5' Double Doors, Double R Window
12'	4' Double Doors, (2) K Windows	5' Double Doors, (1) E Window w/ Shutters	10'	5' Double Doors, Double R Window
14'	5 Double Door, (2) E Windows	4' Double Doors, (2) K Windows w/ Shutters	12'	6' Double Doors, Double R Window
16'	5' Double Doors, (2) E Windows	5' Double Doors, (2) E Windows w/ Shutters		
18' – 24'	6' Double Doors, (2) E Windows	6' Double Doors, (2) E Windows w/ Shutters		



Colonial Series

Size	T-111 A-Frame Storage	Vinyl/Pine A-Frame Storage	T-111 Quaker Storage	Vinyl/Pine Quaker Storage	T-111 Kountry Shed	Vinyl/Pine Kountry Shed
6x8	\$2,365.00	\$2,540.00	\$2,420.00	\$2,590.00	\$2,430.00	\$2,600.00
6x10	\$2,610.00	\$2,800.00	\$2,669.00	\$2,869.00	\$2,745.00	\$2,935.00
8x8	\$2,539.00	\$2,740.00	\$2,590.00	\$2,805.00	\$2,600.00	\$2,805.00
8x10	\$2,869.00	\$3,085.00	\$2,935.00	\$3,150.00	\$2,950.00	\$3,169.00
8x12	\$3,115.00	\$3,350.00	\$3,180.00	\$3,430.00	\$3,199.00	\$3,430.00
8x14	\$3,360.00	\$3,610.00	\$3,445.00	\$3,696.00	\$3,445.00	\$3,696.00
8x16	\$3,650.00	\$3,925.00	\$3,725.00	\$4,010.00	\$3,735.00	\$4,010.00
10x10	\$3,200.00	\$3,450.00	\$3,285.00	\$3,535.00	\$3,285.00	\$3,535.00
10x12	\$3,450.00	\$3,715.00	\$3,530.00	\$3,796.00	\$3,530.00	\$3,796.00
10x14	\$3,779.00	\$4,079.00	\$3,860.00	\$4,179.00	\$3,860.00	\$4,160.00
10x16	\$4,110.00	\$4,425.00	\$4,210.00	\$4,525.00	\$4,190.00	\$4,510.00
10x18	\$4,436.00	\$4,789.00	\$4,540.00	\$4,905.00	\$4,520.00	\$4,870.00
10x20	\$4,769.00	\$5,135.00	\$4,888.00	\$5,250.00	\$4,850.00	\$5,220.00
10x22	\$5,099.00	\$5,499.00	\$5,215.00	\$5,630.00	\$5,180.00	\$5,580.00
10x24	\$5,430.00	\$5,845.00	\$5,560.00	\$5,980.00	\$5,510.00	\$5,930.00
12x12	\$3,805.00	\$4,115.00	\$3,896.00	\$4,215.00	\$3,889.00	\$4,196.00
12x14	\$4,179.00	\$4,510.00	\$4,279.00	\$4,630.00	\$4,260.00	\$4,595.00
12x16	\$4,550.00	\$4,910.00	\$4,660.00	\$5,025.00	\$4,636.00	\$4,990.00
12x18	\$4,920.00	\$5,305.00	\$5,040.00	\$5,440.00	\$5,005.00	\$5,390.00
12x20	\$5,295.00	\$5,720.00	\$5,420.00	\$5,850.00	\$5,375.00	\$5,800.00
12x22	\$5,665.00	\$6,115.00	\$5,796.00	\$6,269.00	\$5,750.00	\$6,196.00
12x24	\$6,035.00	\$6,510.00	\$6,179.00	\$6,660.00	\$6,118.00	\$6,595.00
12x26	\$6,450.00	\$6,960.00	\$6,610.00	\$7,125.00	\$6,535.00	\$7,040.00
12x28	\$6,865.00	\$7,405.00	\$7,020.00	\$7,589.00	\$6,945.00	\$7,489.00
12x30	\$7,275.00	\$7,850.00	\$7,450.00	\$8,035.00	\$7,360.00	\$7,935.00
12x32	\$7,689.00	\$8,299.00	\$7,869.00	\$8,499.00	\$7,777.00	\$8,380.00
12x34	\$8,100.00	\$8,745.00	\$8,295.00	\$8,960.00	\$8,185.00	\$8,830.00
12x36	\$8,515.00	\$9,190.00	\$8,725.00	\$9,410.00	\$8,599.00	\$9,275.00
14x16	\$5,525.00	\$5,990.00	-	-	-	-
14x18	\$5,970.00	\$6,470.00	-	-	-	-
14x20	\$6,420.00	\$6,950.00	-	-	-	-
14x22	\$6,880.00	\$7,449.00	-	-	-	-
14x24	\$7,329.00	\$7,930.00	-	-	-	-
14x26	\$7,825.00	\$8,475.00	-	-	-	-
14x28	\$8,339.00	\$9,040.00	-	-	-	-
14x30	\$8,835.00	\$9,569.00	-	-	-	-
14x32	\$9,330.00	\$10,115.00	-	-	-	-
14x34	\$9,845.00	\$10,660.00	-	-	-	-
14x36	\$10,340.00	\$11,210.00	-	-	-	-

*Door w/ Arch Trim, 10" Antique Hinges, "E" Windows, Vents and 5/8" Duratemp (T-111) Standard

*14' Wide Buildings are 14' Wide to the Outside of the Roof Line. Smaller Soffit Overhangs for More Interior Space

Colonial Shed Series Specifications

Foundation	Pressure Treated 4x4's	Sub – Flooring	2x4 Pressure Treated Floor Joists (8', 10' wide - 16 On Center ~ 12' Wide – 12" On Center)
Flooring	5/8" Ext Grade Plywood	Wall Framing	2x4 – 16" On Center
Roof Framing	2x4 Rafters – 16" On Center	Siding – Choice of	5/8" Primed Duratemp or Vinyl over 1/2" Plywood
Roof Deck	1/2" Plywood (5" Gable Overhangs)	Roofing Surface	30 year Architectural Asphalt Shingle
Doors	Arch Trim on Rectangle Doors	Windows	Aluminum Vertical Slider Framed w/ 1x4 Trim
Vents	Two 8x10 Garden Vents	Siding Finish	Choice of 16 Colors
Hardware	Antique	Overhang	5"

Front Wall Door and Window Combinations

Shed Length	Storage Standard	Storage w/ Shutters	Shed Width (Kountry)	Kountry
8'	3' Door, (1) K Window	Not Available w/ Shutters		5' Double Doors, 1 R Window
10'	4' Double Doors, (2) E Windows	4' Double Doors, (1) E Window w/ Shutters	8'	5' Double Doors, Double R Window
12'	4' Double Doors, (2) K Windows	5' Double Doors, (1) E Window w/ Shutters	10'	5' Double Doors, Double R Window
14'	5' Double Doors, (2) E Windows	4' Double Doors, (2) K Windows w/ Shutters	12'	6' Double Doors, Double R Window
16'	5' Double Doors, (2) E Windows	5' Double Doors, (2) E Windows w/ Shutters		
18' – 24'	6' Double Doors, (2) E Windows	6' Double Doors, (2) E Windows w/ Shutters		



Manor Series

Size	T-111 A-Frame	Vinyl/Pine A-Frame	T-111 Quaker	Vinyl/Pine Quaker	T-111 Dutch	Vinyl/Pine Dutch
8x10	\$3,685.00	\$3,900.00	\$3,820.00	\$4,050.00	\$4,120.00	\$3,985.00
8x12	\$3,980.00	\$4,215.00	\$4,130.00	\$4,380.00	\$4,415.00	\$4,669.00
8x14	\$4,260.00	\$4,510.00	\$4,410.00	\$4,679.00	\$4,710.00	\$4,960.00
8x16	\$4,590.00	\$4,860.00	\$4,760.00	\$5,040.00	\$5,040.00	\$5,325.00
10x10	\$4,120.00	\$4,369.00	\$4,285.00	\$4,535.00	\$4,569.00	\$4,820.00
10x12	\$4,415.00	\$4,680.00	\$4,580.00	\$4,869.00	\$4,869.00	\$5,150.00
10x14	\$4,795.00	\$5,095.00	\$4,979.00	\$5,295.00	\$5,260.00	\$5,560.00
10x16	\$5,175.00	\$5,490.00	\$5,375.00	\$5,710.00	\$5,640.00	\$5,975.00
10x18	\$5,555.00	\$5,905.00	\$5,770.00	\$6,139.00	\$6,040.00	\$6,390.00
10x20	\$5,935.00	\$6,300.00	\$6,169.00	\$6,550.00	\$6,420.00	\$6,800.00
10x22	\$6,315.00	\$6,699.00	\$6,565.00	\$6,969.00	\$6,815.00	\$7,199.00
10x24	\$6,695.00	\$7,110.00	\$6,960.00	\$7,395.00	\$7,195.00	\$7,630.00
12x12	\$4,880.00	\$5,180.00	\$5,080.00	\$5,380.00	\$5,350.00	\$5,650.00
12x14	\$5,310.00	\$5,650.00	\$5,530.00	\$5,880.00	\$5,799.00	\$6,130.00
12x16	\$5,740.00	\$6,110.00	\$5,975.00	\$6,359.00	\$6,225.00	\$6,610.00
12x18	\$6,170.00	\$6,570.00	\$6,420.00	\$6,840.00	\$6,670.00	\$7,089.00
12x20	\$6,600.00	\$7,020.00	\$6,869.00	\$7,300.00	\$7,100.00	\$7,535.00
12x22	\$7,050.00	\$7,499.00	\$7,330.00	\$7,799.00	\$7,569.00	\$8,030.00
12x24	\$7,479.00	\$7,960.00	\$7,777.00	\$8,779.00	\$8,010.00	\$8,510.00

*Door w/ Arch Trim, 10" Antique Hinges, "E" Windows, Vents and 5/8" Duratemp (T-111) Standard

*Tar Paper is Standard on Manor Series Sheds

*Set Up is Included in the Above Price

*Set Up over 40 Miles May Be Subject to an Additional Charge

Manor Shed Series Specifications

Foundation	Pressure Treated 4x4's	Sub – Flooring	2x4 Pressure Treated Floor Joists (8', 10' wide - 16 On Center ~ 12' Wide – 12" On Center)
Flooring	5/8" Ext Grade Plywood	Wall Framing	2x4 – 16" On Center
Roof Framing	2x4 Rafters – 16" On Center	Siding – Choice of	5/8" Primed Duratemp or D4 Vinyl over 1/2" Plywood
Roof Deck	1/2" Plywood	Roofing Surface	30 year Architectural Asphalt Shingle – Tar Paper
Doors	Arched Trim on Rectangle Doors	Windows	Two 24" x 36" Aluminum Vertical Slider Framed w/ 1x4 Trim
Vents	Two 12x14 Classic Vents	Siding Finish	Choice of 16 Colors
Hardware	Antique	Wall Height	A-Frame: 7'4" Dutch: 6'8"
Roof Pitch	A-Frame 10/12	Overhang	12"

Elite Series

Size	T-111 A-Frame	Vinyl/Pine A-Frame	T-111 Quaker	Vinyl/Pine Quaker	T-111 Dutch	Vinyl/Pine Dutch
10x12	\$4,340.00	\$4,490.00	\$4,710.00	\$4,875.00	\$4,625.00	\$4,790.00
10x14	\$4,750.00	\$4,897.00	\$5,150.00	\$5,299.00	\$5,065.00	\$5,230.00
10x16	\$5,155.00	\$5,320.00	\$5,570.00	\$5,755.00	\$5,489.00	\$5,670.00
10x18	\$5,560.00	\$5,745.00	\$6,010.00	\$6,210.00	\$5,930.00	\$6,129.00
10x20	\$5,967.00	\$6,169.00	\$6,450.00	\$6,666.00	\$6,350.00	\$6,569.00
10x22	\$6,375.00	\$6,575.00	\$6,890.00	\$7,110.00	\$6,790.00	\$7,010.00
10x24	\$6,780.00	\$7,000.00	\$7,330.00	\$7,565.00	\$7,215.00	\$7,450.00
12x14	\$5,280.00	\$5,465.00	\$5,730.00	\$5,930.00	\$5,630.00	\$5,830.00
12x16	\$5,755.00	\$5,955.00	\$6,237.00	\$6,455.00	\$6,139.00	\$6,355.00
12x18	\$6,210.00	\$6,410.00	\$6,727.00	\$5,945.00	\$6,629.00	\$6,845.00
12x20	\$6,667.00	\$6,885.00	\$7,220.00	\$7,469.00	\$7,119.00	\$7,350.00
12x22	\$7,124.00	\$7,359.00	\$7,725.00	\$7,975.00	\$7,590.00	\$7,859.00
12x24	\$7,580.00	\$7,830.00	\$8,215.00	\$8,480.00	\$8,080.00	\$8,349.00
12x26	\$8,105.00	\$8,370.00	\$8,770.00	\$9,070.00	\$8,639.00	\$8,940.00
12x28	\$8,610.00	\$8,895.00	\$9,329.00	\$9,645.00	\$9,179.00	\$9,495.00
12x30	\$9,134.00	\$9,435.00	\$9,900.00	\$10,215.00	\$9,735.00	\$10,069.00
12x32	\$9,640.00	\$9,959.00	\$10,440.00	\$10,790.00	\$10,275.00	\$10,625.00
12x34	\$10,147.00	\$10,480.00	\$10,910.00	\$11,365.00	\$10,815.00	\$11,180.00
12x36	\$10,670.00	\$11,020.00	\$11,555.00	\$11,939.00	\$11,370.00	\$11,754.00
14x16	\$6,237.00	\$6,454.00	\$6,770.00	\$7,005.00	\$6,670.00	\$6,905.00
14x18	\$6,727.00	\$6,960.00	\$7,295.00	\$7,560.00	\$7,179.00	\$7,444.00
14x20	\$7,217.00	\$7,470.00	\$7,835.00	\$8,100.00	\$7,700.00	\$7,985.00
14x22	\$7,725.00	\$7,990.00	\$8,375.00	\$8,675.00	\$8,240.00	\$8,540.00
14x24	\$8,215.00	\$8,499.00	\$8,915.00	\$9,215.00	\$8,765.00	\$9,080.00
14x26	\$8,770.00	\$9,070.00	\$9,505.00	\$9,840.00	\$9,370.00	\$9,687.00
14x28	\$9,327.00	\$9,645.00	\$10,110.00	\$10,460.00	\$9,960.00	\$10,295.00
14x30	\$9,900.00	\$10,235.00	\$10,735.00	\$11,100.00	\$10,569.00	\$10,935.00
14x32	\$10,440.00	\$10,790.00	\$11,325.00	\$11,709.00	\$11,140.00	\$11,525.00
14x34	\$10,999.00	\$11,365.00	\$11,930.00	\$12,330.00	\$11,730.00	\$12,130.00
14x36	\$11,555.00	\$11,939.00	\$12,520.00	\$12,955.00	\$12,339.00	\$12,755.00

*Door w/ Arch Trim, 10" Antique Hinges, "E" Windows, Vents and 5/8" Duratemp (T-111) Standard

Due to height restrictions sheds are shipped with partially assembled roofs. To have the roof system installed by The Carriage Shed add \$15.00 per square foot for buildings up to 12x14. For 12x16 to 12x30 buildings add \$13.50 per square foot. Any building with more then 360 square feet will be per quote. Set-up charge over 40 miles will include additional drive time.

Modular Elite Series

	One Story w/ 1st Floor	One Story w/ 1st Floor	Two Story w/ 1st Floor	Two Story w/ 1st Floor
Size	T-111 & Vinyl A-Frame	T-111 & Vinyl Dutch	T-111 & Vinyl A-Frame	T-111 & Vinyl Dutch
16x20	\$11,840.00	\$12,375.00	\$13,440.00	\$13,975.00
16x22	\$13,020.00	\$13,620.00	\$14,784.00	\$15,369.00
16x24	\$14,215.00	\$14,845.00	\$16,128.00	\$16,765.00
16x26	\$15,389.00	\$16,089.00	\$17,472.00	\$18,177.00
16x28	\$16,589.00	\$17,320.00	\$18,818.00	\$19,569.00
16x30	\$17,760.00	\$18,560.00	\$20,160.00	\$20,960.00
16x36	\$21,310.00	\$22,295.00	\$24,195.00	\$25,160.00
18x20	\$13,120.00	\$13,720.00	\$14,920.00	\$15,528.00
18x22	\$14,430.00	\$15,095.00	\$16,415.00	\$17,079.00
18x24	\$15,740.00	\$16,470.00	\$17,905.00	\$18,620.00
18x26	\$17,065.00	\$17,830.00	\$19,399.00	\$20,180.00
18x28	\$18,375.00	\$19,205.00	\$20,888.00	\$21,725.00
18x30	\$19,680.00	\$20,580.00	\$22,380.00	\$23,280.00
18x36	\$23,625.00	\$24,689.00	\$26,860.00	\$27,940.00
20x20	\$14,400.00	\$15,069.00	\$16,400.00	\$17,069.00
20x22	\$15,840.00	\$16,575.00	\$18,040.00	\$18,777.00
20x24	\$17,280.00	\$18,080.00	\$19,680.00	\$20,480.00
20x26	\$18,720.00	\$19,589.00	\$21,320.00	\$22,189.00
20x28	\$20,160.00	\$21,095.00	\$22,960.00	\$23,899.00
20x30	\$21,600.00	\$22,600.00	\$24,600.00	\$25,600.00
20x36	\$25,920.00	\$27,120.00	\$29,520.00	\$30,730.00

*Door w/ Arch Trim, 10" Antique Hinges, "E" Windows, Vents and 5/8" Duratemp (T-111) Standard

*Set Up is Included in the Above Price

*Set Up over 40 Miles May Be Subject to an Additional Charge

Elite Shed Series Specifications

Foundation	Pressure Treated 4x4's	Sub – Flooring	2x6 Pressure Treated Floor Joists ~ 12" On center
Flooring	5/8" Ext Grade Plywood	Wall Framing	2x4 – 16" On Center
Roof Framing	2x6 Rafters – 16" On Center	Siding – Choice of	5/8" Primed Duratemp or D4 Vinyl over 1/2" Plywood
Roof Deck	1/2" Plywood	Roofing Surface	30 year Architectural Asphalt Shingle
Doors	Arched Trim on Rectangle Doors	Windows	Two 24" x 36" Aluminum Vertical Slider Framed w/ 1x4 Trim
Vents	Two 12x14 Classic Vents	Siding Finish	Choice of 16 Colors
Hardware	Antique	Wall Height	A-Frame: 7'9"
Roof Pitch	A-Frame 12/12	Overhang	12"

Classic Garden Structures Option List

Bench & Racks

Work Bench (24" Wide w/ 5/8" Plywood	\$6.69 per lineal foot	Tool Rack – (2) Hooks	\$25.00 \$5.00 Per Additional Hook
---	------------------------	------------------------------	---------------------------------------

Cupola

Patriot Cupolas

Size & Style	Asphalt or Aluminum	Pagoda Copper	Clear Coat Copper	Automotive Clear Coat Copper
18" Painted Wood Louvered Cupola	\$269.00	\$335.00	\$385.00	\$420.00
18" Vinyl Louvered Cupola	\$300.00	\$369.00	\$420.00	\$450.00

*Weathervane Mount Included on all Cupolas

*Painted Cupolas (Available in all Colors) \$75.00

Hilton Series

Azek (Vinyl) Cupolas

Size & Style	Asphalt or Aluminum	Pagoda Copper	Clear Coat Copper	Automotive Clear Coat Copper
22" Louvered Cupola	\$420.00	\$550.00	\$600.00	\$635.00
22" Windowed Cupola	\$420.00	\$550.00	\$600.00	\$635.00
24" Louvered Cupola	\$485.00	\$600.00	\$650.00	\$700.00
24" Windowed Cupola	\$485.00	\$600.00	\$650.00	\$700.00
30" Louvered Cupola	\$650.00	\$850.00	\$915.00	\$965.00
30" Windowed Cupola	\$650.00	\$850.00	\$915.00	\$965.00
36" Louvered Cupola	\$835.00	\$1,085.00	\$1,150.00	\$1,215.00
36" Windowed Cupola	\$835.00	\$1,085.00	\$1,150.00	\$1,215.00

*Weathervane Mount Included on all Cupolas

*Painted Cupolas (Available in all Colors) \$75.00

Doors

Duratemp (T-111) Doors

Style	Upgrade	Additional	Style	Upgrade	Additional
3'					
3' Single Door	-	\$169.00	3' Arch Door	\$120.00	\$285.00
3' Door w/ Transom or 4 Lite Window	\$95.00	\$260.00	3' Door w/ Arch Transom Window	\$95.00	\$260.00
3' Eyebrow Door	\$120.00	\$285.00	3' Eyebrow Door w/ Glass	\$210.00	\$375.00
3' Door w/ Wood 12-Lite	\$160.00	\$325.00	3' Door w/ Wood 15-Lite	\$185.00	\$350.00
4 ½'					
4 ½' Double Door	-	\$295.00	4 ½' Arch Double Door	\$145.00	\$435.00
4 ½' Double Door w/ Transom or 4-Lite Windows	\$150.00	\$445.00	4 ½' Double Door w/ Arched Transom Windows	\$150.00	\$445.00
4 ½' Eyebrow Double Door	\$145.00	\$435.00	4 ½' Eyebrow Double Door w/ Glass	\$325.00	\$620.00
5'					
5' Double Door	-	\$295.00	5' Arch Double Door	\$160.00	\$450.00
5' Double Door w/ Transom or 4-Lite Window	\$150.00	\$445.00	5' Double Door w/ Arched Transom Windows	\$150.00	\$445.00
5' Eyebrow Double Door	\$160.00	\$450.00	5' Eyebrow Double Door w/ Glass	\$345.00	\$635.00
6'					
6' Double Door	-	\$295.00	6' Arch Double Door	\$185.00	\$475.00
6' Double Door w/ Transom or 4-Lite Windows	\$150.00	\$445.00	6' Double Door w/ Arched Transom Windows	\$150.00	\$445.00
6' Eyebrow Double Door	\$185.00	\$475.00	6' Eyebrow Double Door w/ Glass	\$369.00	\$660.00
6' Double Door w/ Wood 12-Lite	\$320.00	\$610.00	6' Double Door w/ Wood 15-Lite	\$369.00	\$660.00

Duratemp (T-111) Doors ~ Continued

Style	Upgrade	Additional	Style	Upgrade	Additional
8'					
8' Double Door	\$225.00	\$545.00	8' Arch Double Door	Not Available	Not Available
8' Double Door w/ Transom Windows	\$425.00	\$745.00	8' Double Door w/ Arched Transom Windows	\$425.00	\$745.00
8' Eyebrow Double Door	\$445.00	\$760.00	8' Eyebrow Double Door w/ Glass	\$645.00	\$960.00
8'6" Double Door	\$225.00	\$545.00	8'6" Double Door w/ Transom	\$425.00	\$745.00
Dutch Door (per door)	\$100.00				

*Single Door Instead of Standard Double Door: -\$50.00

Fiberglass Doors

Size & Style	Upgrade	Additional	Size & Style	Upgrade	Additional
3' Slab Door					
3'x72" Slab Solid Door	\$69.00	\$200.00	3'x72" Slab w/ 9-Lite	\$100.00	\$235.00
3'x72" Slab w/ 11-Lite (Arch)	\$120.00	\$250.00	3'x72" Slab w/ 15-Lite	\$135.00	\$269.00
5' Slab Door					
5'x72" Slab Solid Door	\$135.00	\$360.00	5'x72" Slab w/ 9-Lite	\$200.00	\$425.00
5'x72" Slab w/ 11-Lite (Arch)	\$235.00	\$460.00	5'x72" Slab w/ 15-Lite	\$269.00	\$495.00
6' Slab Door					
6'x72" Slab Solid Door	\$135.00	\$360.00	6'x72" Slab w/ 9-Lite	\$200.00	\$425.00
6'x72" Slab w/ 11-Lite (Arch)	\$235.00	\$460.00	6'x72" Slab w/ 15-Lite	\$269.00	\$495.00
3' Pre-Hung					
3'x73 1/2' Pre-Hung Solid Door	\$195.00	\$360.00	3'x73 1/2" Pre-Hung w/ 9-Lite	\$235.00	\$400.00
3'x73 1/2' Pre-Hung w/ 11-Lite (Arch)	\$250.00	\$420.00	3'x73 1/2' Pre-Hung w/ 15-Lite	\$285.00	\$435.00
6' Pre-Hung					
6'x73 1/2' Pre-Hung Solid Doors	\$385.00	\$595.00	6'x73 1/2' Pre-Hung w/ 9-Lite	\$460.00	\$669.00
6'x73 1/2' Pre-Hung w/ 11-Lite	\$495.00	\$700.00	6'x73 1/2' Pre-Hung w/ 15-Lite	\$550.00	\$750.00
6x78" Pre-Hung w/ 15-Lite	\$550.00	\$750.00	6' Glass Patio Slider	\$585.00	\$795.00

*Painted Doors (Per Door) \$50.00

*Slab Doors: is a Shed Door, Hinges are Located on the Outside with an L-Handle

*Pre-Hung Doors: is Similar to a House Door, Hinges are on the Inside w/ Weatherstripping

Garage Doors

For the Following Door Sizes: 6'x6', 6'x6'6", 8'x6', 8'x6'6", 8'x7', 9'x6'6" & 9'x7'

Style	Price	Style	Price
Steel Garage Door	\$725.00	Carriage Style Garage Door	\$810.00
Insulated Steel Garage Door	\$825.00	Insulated Carriage Style Garage Door	\$910.00
Steel Garage Door w/ Glass	\$820.00	Carriage Style Garage Door w/ Designer Window	\$985.00
Insulated Steel Garage Door w/ Glass	\$969.00	Insulated Carriage Style Garage Door w/ Designer Window	\$1,135.00
Arched Garage Door Trim	\$185.00	Decorative Handles (Function as Lock)	\$85.00
Custom Color Painted Garage Door	\$295.00	Garage Door in Weight Bear Wall of Elite	\$169.00

*Garage Doors Available in White, Almond, Brown and Sandstone

Dormers

A-Frame Dormer w/ Door or Window

Duratemp (T-111)	Vinyl	Smartside (Clapboard)	Cedar	Vinyl Shakes
\$1,125.00	\$1,210.00	\$1,295.00	\$1,375.00	\$1,545.00

Dutch Dormer w/ Door

Duratemp (T-111)	Vinyl	Smartside (Clapboard)	Cedar	Vinyl Shakes
\$920.00	\$1,000.00	\$1,085.00	\$1,169.00	\$1,335.00

Dutch Dormer w/ Window

Duratemp (T-111)	Vinyl	Smartside (Clapboard)	Cedar	Vinyl Shakes
\$920.00	\$1,000.00	\$1,085.00	\$1,169.00	\$1,335.00

Extra Gable / A-Frame

Duratemp (T-111)	Vinyl	Smartside (Clapboard)	Cedar	Vinyl Shakes
\$750.00	\$835.00	\$920.00	\$1,000.00	\$1,169.00

False Dormer

Duratemp (T-111)	Vinyl	Duratemp (T-111)	Smartside (Clapboard)	Cedar	Vinyl Shakes
\$750.00	\$669.00	\$585.00	\$750.00	\$835.00	\$1,000.00

Mini Shed Dormer

	Duratemp (T-111)	Vinyl	Smartside (Clapboard)	Cedar	Vinyl Shakes
(2) Transom Windows	\$725.00	\$800.00	\$869.00	\$975.00	\$1,145.00
(3) Transom Windows	\$825.00	\$900.00	\$969.00	\$1,075.00	\$1,245.00
(4) Transom Windows	\$925.00	\$1,000.00	\$1,069.00	\$1,175.00	\$1,345.00
(5) Transom Windows	\$1,025.00	\$1,100.00	\$1,169.00	\$1,275.00	\$1,445.00
(6) Transom Windows	\$1,125.00	\$1,200.00	\$1,269.00	\$1,375.00	\$1,545.00

Shed Dormer (Does Not Include Windows)

Size	Duratemp (T-111)	Vinyl	Smartside (Clapboard)	Cedar	Vinyl Shakes
12' Long	\$1,085.00	\$1,169.00	\$1,250.00	\$1,335.00	\$1,750.00
16' Long	\$1,210.00	\$1,295.00	\$1,375.00	\$1,460.00	\$1,875.00
20' Long	\$1,335.00	\$1,420.00	\$1,500.00	\$1,585.00	\$2,000.00
24' Long	\$1,460.00	\$1,545.00	\$1,625.00	\$1,710.00	\$2,125.00



A-Frame Dormer w/ Door



Dutch Dormer w/ Door



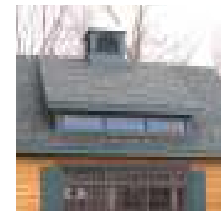
Dutch Dormer w/ Window



Extra Gable / A-Frame



False Dormer



Mini-Shed Dormer



Shed Dormer

Floors

Pressure Treated Plywood	\$.69 per square foot	8" On Center Joist	\$.50 per square foot	Double Layer Plywood	\$1.20 per square foot
Insulated Floor	\$1.25 per square foot	12" On Center Joist	\$.35 per square foot	Double Layer Pressure Treated Plywood	\$2.00 per square foot

Flower Box

30" Flower Box	\$85.00
-----------------------	---------

Lofts

2x4 Joist w/ 1/2" Plywood	\$3.00 per square foot	2x6 Joist w/ 5/8" Plywood	\$4.00 per square foot	2x8 Joist w/ 5/8" Plywood	\$4.25 per square foot
----------------------------------	------------------------	----------------------------------	------------------------	----------------------------------	------------------------

Paint

Custom Paint Color – Classic Provides	\$125.00 Per Color
--	--------------------

Partitions

Partitions – Floor to Peak	\$24.00 per foot	Partitions – Wall Height	\$17.00 per foot
-----------------------------------	------------------	---------------------------------	------------------

Porch

Base Price is Determined by Combined Shed / Porch Length

Description	Price	Description	Price
Hip Roof	15% of Base Price	Pressure Treated 5/4 Porch Deck	\$2.95 per square foot
Azek (Vinyl) Porch Deck	\$11.69 per square foot	Finished Porch Ceiling	\$3.50 per square foot
Pressure Treated Rails & Posts	\$22.00 per perimeter foot	Vinyl Rails & Posts	\$29.00 per perimeter foot
8" Porch Columns	\$420.00 Per Column		

Gable Porches

Description	Price	Description	Price	Description	Price
4x8 Gable Porch (No Floor)	\$835.00	4x10 Gable Porch (No Floor)	\$920.00	4x12 Gable Porch (No Floor)	\$960.00

Built-In Porches

(Built-In Porches Include Vinyl Deck, Posts, Rail & Single Door)

Description	Price	Description	Price
3x6 Built-In Porches w/ Single Door	\$825.00	3x8 Built-In Porches w/ Single Door	\$920.00
4x6 Built-In Porches w/ Single Door	\$935.00	4x8 Built-In Porches w/ Single Door	\$985.00

Screen Options (Door Included in Screen Price)

Size	4-Track	Aluminum Screens	Size	4-Track	Aluminum Screens
10x8	\$2,310.00	\$1,125.00	12x8	\$2,460.00	\$1,150.00
10x10	\$2,610.00	\$1,335.00	12x10	\$2,750.00	\$1,375.00
10x12	\$2,895.00	\$1,420.00	12x12	\$2,835.00	\$1,435.00
10x14	\$3,180.00	\$1,550.00	12x14	\$3,325.00	\$1,620.00
10x16	\$3,469.00	\$1,695.00	12x16	\$3,620.00	\$1,750.00

Potting Shed Package

Description	Price	Description	Price
(1) 30x30 Skylight, (2) Windows, 4' Work Bench & Tool Rack	\$625.00	(2) 30x30 Skylights, (4) Windows, 8' Work Bench & Tool Rack	\$1,210.00

Ramps

5' Ramp	\$125.00	6' Ramp	\$145.00	8' Ramp	\$185.00
----------------	----------	----------------	----------	----------------	----------

Roof

Cedar Shake Roof	\$8.35 per square foot	Metal Roof	\$3.75 per square foot
Ridge Vent	\$10.00 per foot	Drip Edge	\$.60 per perimeter foot
Tar Paper on Roof	\$.50 per square foot of floor space		

Side Walls

Description	Price	Description	Price	Description	Price
Raise Side Walls 6" (Colonial & Classic)	\$2.50 per perimeter foot	Raise Side Walls 12" (Colonial & Classic)	\$3.35 per perimeter foot	Raise Side Walls 12" (Elite)	\$9.25 Per perimeter foot

Siding

(To Determine Upcharge ~ Take Perimeter Foot of Vinyl Siding Times Siding Price)

Siding	Colonial & Classic	Manor & Elite
Natural Finish Rough Cut Knotty Beveled Cedar	\$16.69	\$20.00
Primed & Painted Beveled Cedar Siding	\$22.50	\$26.00
LP Smartside	\$8.35	\$12.00
Cedar Shakes	\$32.00	\$44.00
Vinyl Cedar Shakes	\$29.00	\$40.00
Green Vinyl	\$4.20	\$5.85
Red Vinyl	\$5.85	\$7.50

*Custom Shingles or Vinyl – Provide Manufacturer / Brand ~ Call For Quote

Shutters

27" & 36" Miratec	\$60.00 per pair	40" & 54" Miratec	\$69.00 per pair	Vinyl Shutters	\$35.00 per pair
-------------------	------------------	-------------------	------------------	----------------	------------------

Stairs

L-Shape Stairs	\$660.00	Pull Down Stairs	\$445.00
----------------	----------	------------------	----------

Windows

Aluminum Windows w/ Trim

Size & Style	Code	Upgrade	Additional
18x27	B (Standard Size)	-	\$110.00
18x36	K (Standard Size)	-	\$110.00
24x27	C (Standard Size)	-	\$110.00
24x36	E (Standard Size)	-	\$110.00
24x40	D	\$20.00	\$125.00
24x54	L	\$35.00	\$145.00
30x36	R	\$20.00	\$125.00
30x40	G	\$25.00	\$135.00
30x54	S	\$35.00	\$145.00
18x23 4-Lite		-	\$85.00
30x27 6-Lite		-	\$110.00
Transom Window Above Single Door		-	\$95.00
Transom Window Above Double Door		-	\$185.00
Transom Window Above Window		-	\$95.00

*For Patriot Package Only B Window is Standard. \$20.00 Upcharge for K,C & E Windows

Wood Windows w/ Trim

Size & Style	Upgrade	Additional
20x24 4-Lite	-	\$175.00
28x24 6-Lite	-	\$195.00
Transom Window Above Single Door	-	\$175.00
Transom Window Above Double Door	-	\$350.00
28x35 9-Lite Tilt-In Window	\$160.00	\$235.00
4-Lite Over 4-Lite (Single Hung)	\$160.00	\$269.00
6-Lite Over 6 Lite (Single Hung)	\$210.00	\$320.00
Upgrade to Vinyl Insulated Window	-	\$95.00 per window
Deduct Window From Shed	-\$35.00 per window	-
30"x30" Skylight on Storage Sheds	-	\$460.00

Prices are Subject to Change!